



Hard Chess Puzzle # 0105

By

G Bud Games
<https://gbud.in>

January 14, 2022

Contents

Hard Chess puzzle # 0105 - Mate in 3 moves	4
Hard chess puzzle 0105	4
Solution to hard chess puzzle 0105	5
Solution 1	5
Solution 2	8
Right moves for the solution to the hard chess puzzle 0105	11
Explanation for the moves	11
Categories of hard chess puzzle 0105	12
hard chess puzzle 0105 chart	13
How to view the solution to hard chess puzzle 0105	15
How to get help for moves in the hard chess puzzle 0105	16
Play chess for free	17

List of Figures

1	Solve this hard chess puzzle 0105. Mate in 3 moves @ https://gbud.in/glhrln3	4
2	Solve this hard chess puzzle online with solution @ https://gbud.in/glhrln3	4
3	Initial board position of hard chess puzzle 0105	5
4	Bh5	6
5	bxa5	6
6	e7+	7
7	Kg8	7
8	e8=Q#	8
9	Initial board position of hard chess puzzle 0105	8
10	Bh5	9
11	bxa5	9
12	e7+	10
13	Kg8	10
14	e8=R#	11
15	hard chess puzzle 105 chart 1	13
16	hard chess puzzle 105 chart 2	14
17	hard chess puzzle 105 chart 3	14
18	hard chess puzzle 105 chart 4	15
19	Click the solution button to view solutions @ https://gbud.in/glhrln3	15

20	Click the help button to get help on next move @ https://gbud.in/glhrln3	16
21	Solve more hard puzzles @ https://gbud.in/chshdpz	16
22	Solve other puzzles @ https://gbud.in/chsgppz	16
23	Play chess online for free. Solve puzzles and play with friends	17
24	Solve this puzzle online by scanning this QR code or go to the link below	18

Hard Chess puzzle # 0105 - Mate in 3 moves

Solve this hard chess puzzle and improve your chess games through improvement of your chess strategies and chess tactics. This hard puzzle is a subset of [kids games](#).

Puzzle No : 0105

Difficulty level : hard

Description : Mate in 3 moves

Next Move : White

Player level : Advanced

Short URL for puzzle : <https://gbud.in/glhrln3>

Hard chess puzzle 0105

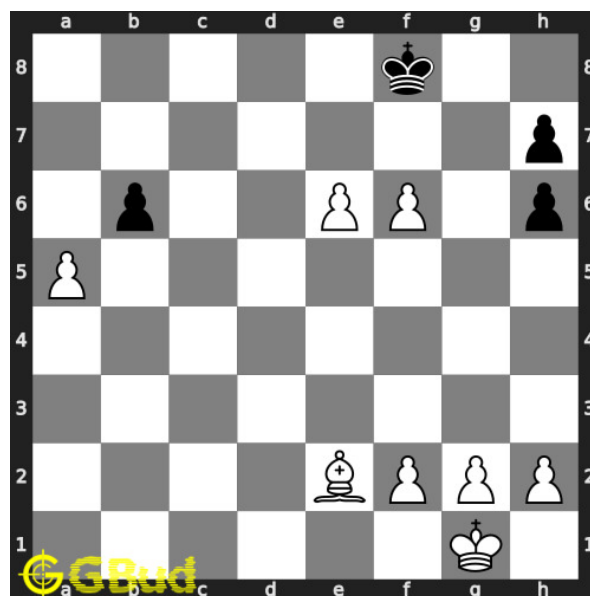


Figure 1: Solve this hard chess puzzle 0105. Mate in 3 moves @ <https://gbud.in/glhrln3>



Figure 2: Solve this hard chess puzzle online with solution @ <https://gbud.in/glhrln3>

Dont forget to check out [chess puzzles](#), [easy chess puzzles](#), [medium chess puzzles](#), [hard chess puzzles](#) and [chess puzzles collections](#) .

Solution to hard chess puzzle 0105

At this puzzle, next [move](#) is by [White](#). The objective of the puzzle is to mate in 3 moves.

See the interactive solution at the [puzzle page](#)

Solution 1

Initial board position This is the initial board position of hard chess puzzle 0105.

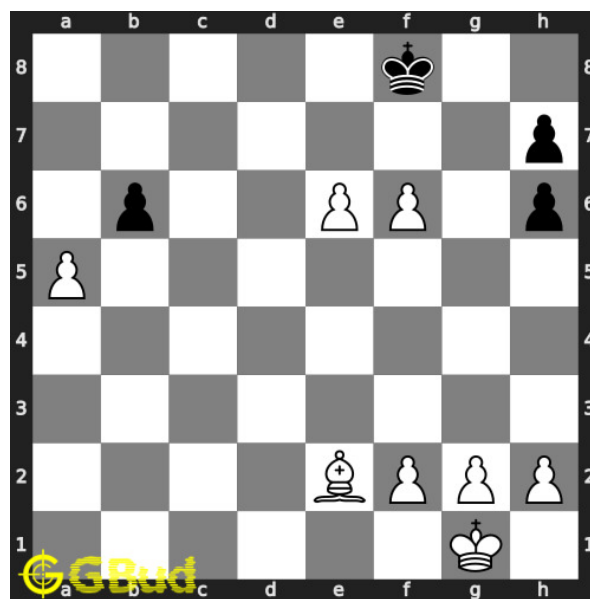


Figure 3: Initial board position of hard chess puzzle 0105

Move 1 Move by white

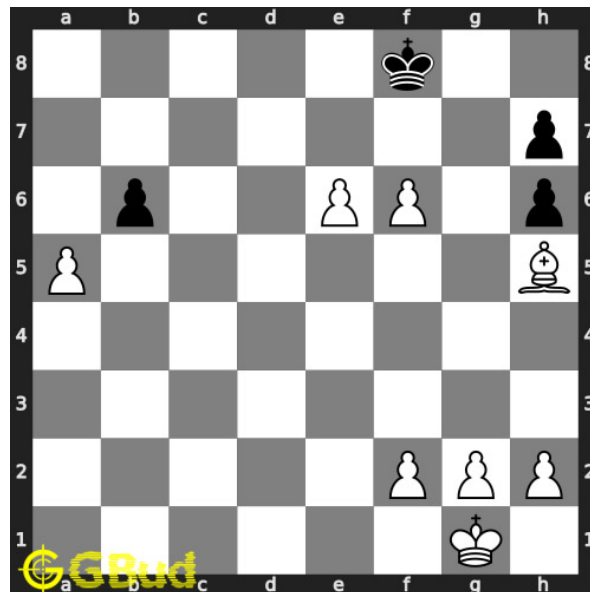


Figure 4: Bh5

your **bishop moves** to h5 to arrest the **pawn** movement and to attack the diagonal

Move 2 Move by black

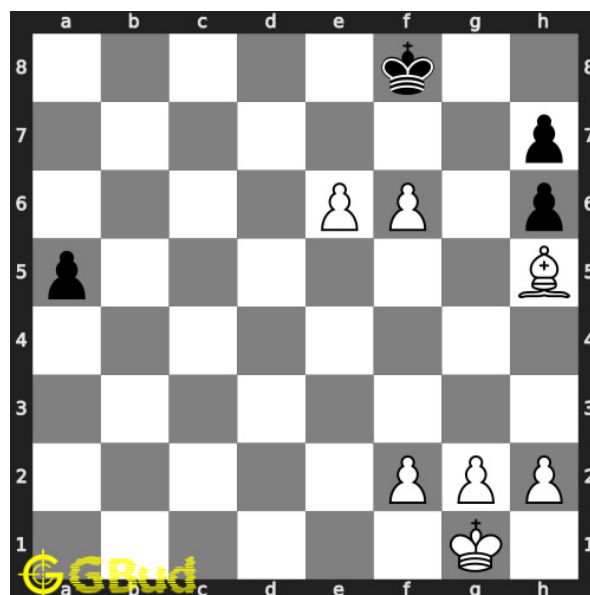


Figure 5: bxa5

opponent's **pawn captures** your **pawn** for a possible proimotion later.

Move 3 Move by white

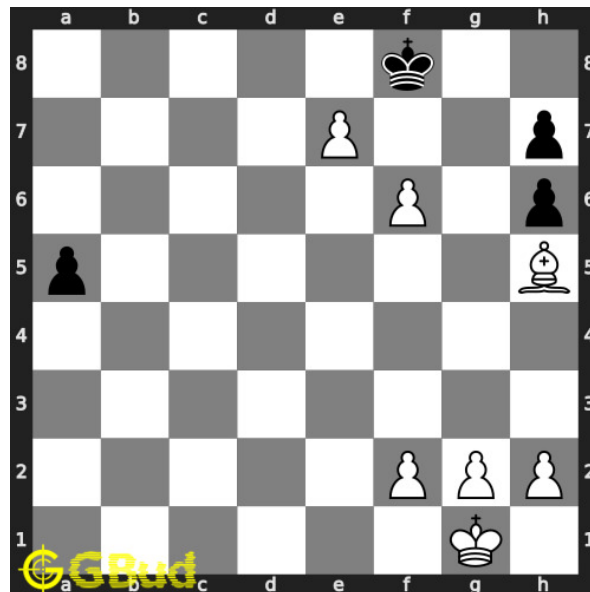


Figure 6: e7+

your **pawn moves** to e7 and gives **check** to opponent.

Move 4 Move by black

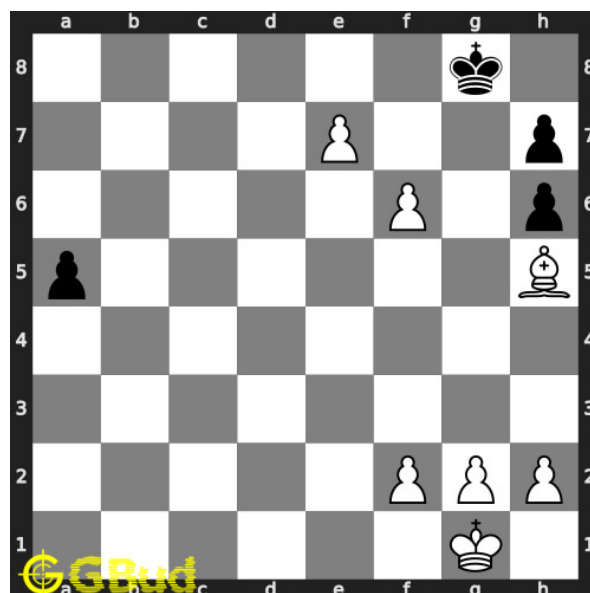


Figure 7: Kg8

opponent's **king moves** to g8 as it can't come to seventh **rank** due to the attack from your **pawn** and **bishop**.

Move 5 Move by white

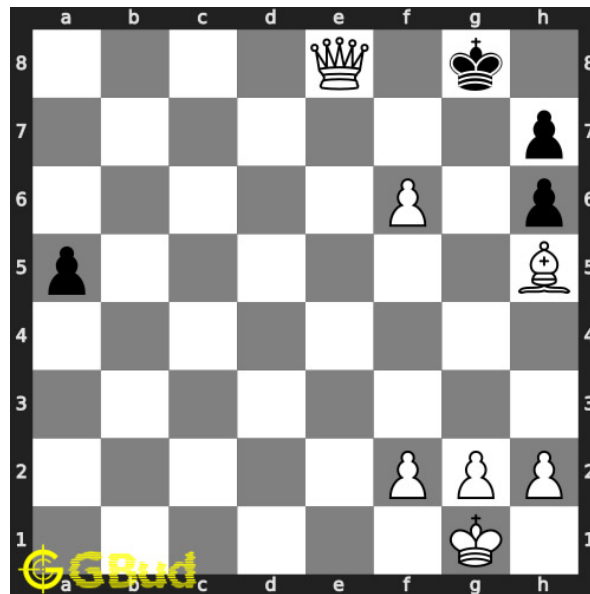


Figure 8: e8=Q#

pawn in e file is promoted to a queen and checkmate.. this is how you can mate in 3 moves.

Solution 2

Initial board position This is the initial board position of hard chess puzzle 0105.

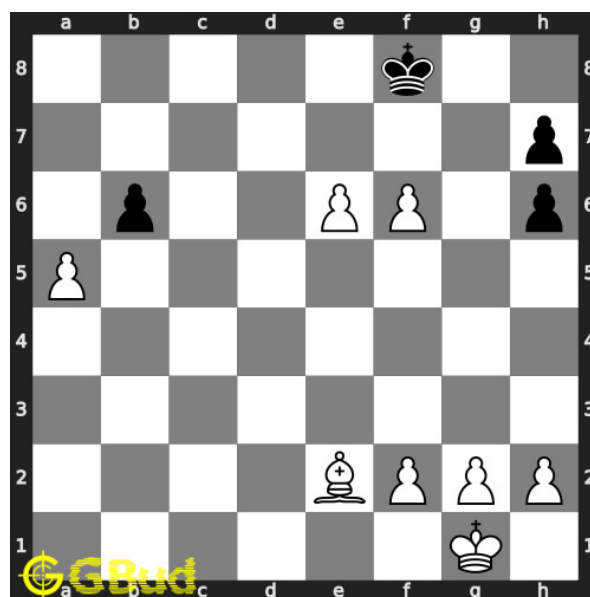


Figure 9: Initial board position of hard chess puzzle 0105

Move 1 Move by white

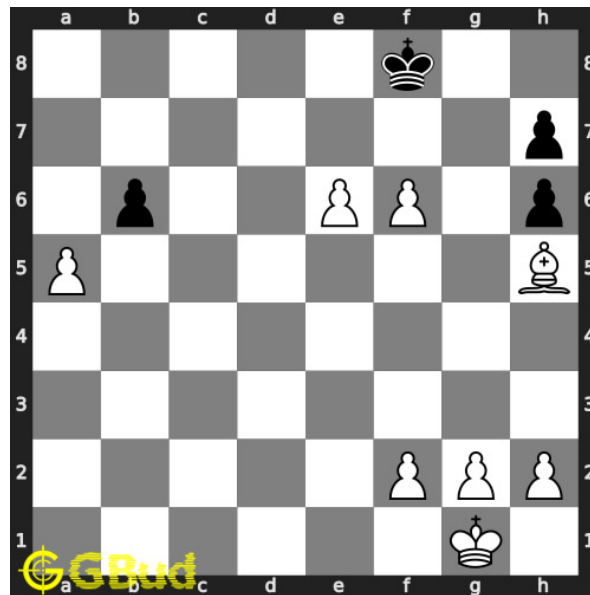


Figure 10: Bh5

your **bishop moves** to h5 to arrest the **pawn** movement and to attack the diagonal

Move 2 Move by black

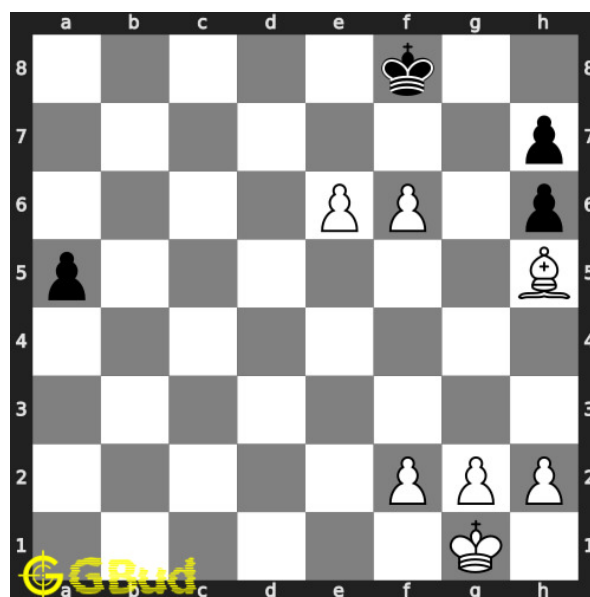


Figure 11: bxa5

opponent's **pawn captures** your **pawn** for a possible proimotion later.

Move 3 Move by white

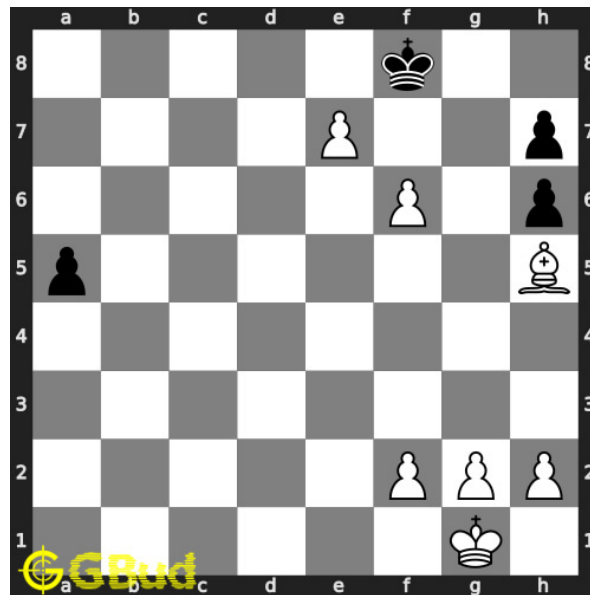


Figure 12: e7+

your **pawn moves** to e7 and gives **check** to opponent.

Move 4 Move by black

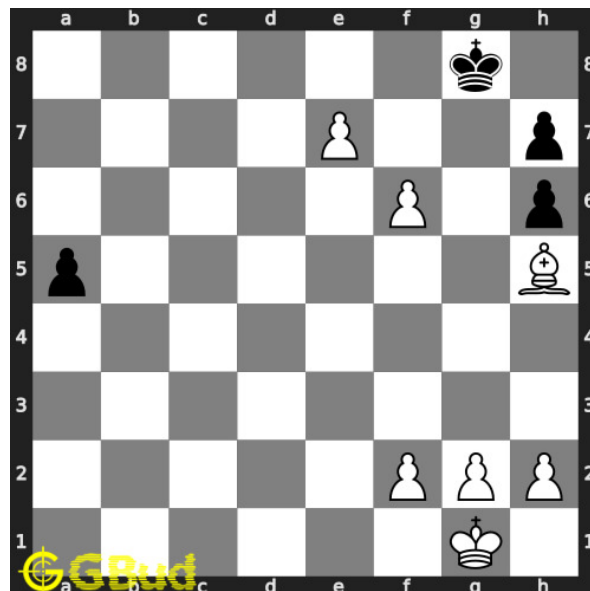


Figure 13: Kg8

opponent's **king moves** to g8 as it can't come to seventh **rank** due to the attack from your **pawn** and **bishop**.

Move 5 Move by white

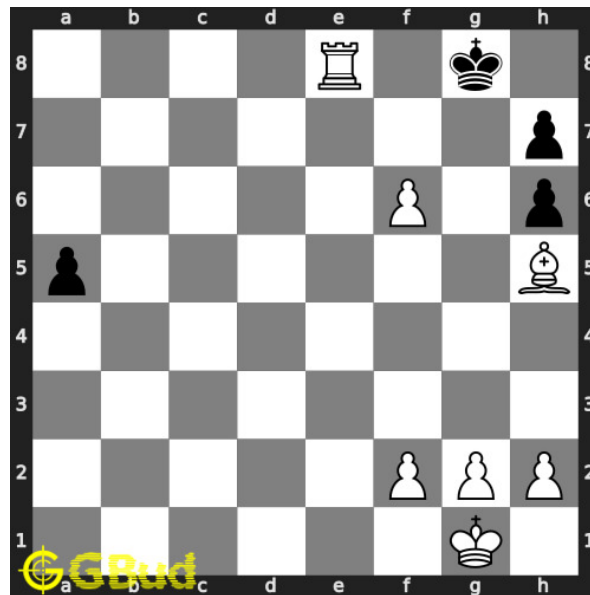


Figure 14: e8=R#

pawn in e file is promoted to a rook and checkmate.. this is how you can mate in 3 moves.

Right moves for the solution to the hard chess puzzle 0105

Based on the objective of the puzzle, you have to make the right moves. Following are the right moves

1. Bh5, e7+, e8=Q#
2. Bh5, e7+, e8=R#

Explanation for the moves

1. Bh5 - Your bishop moves to h5 to arrest the pawn movement and to attack the diagonal
2. bxa5 - Opponent's pawn captures your pawn for a possible promotion later.
3. e7+ - Your pawn moves to e7 and gives check to opponent.
4. Kg8 - Opponent's king moves to g8 as it can't come to seventh rank due to the attack from your pawn and bishop.
5. e8=Q# - Pawn in e file is promoted to a queen and checkmate.. This is how you can mate in 3 moves.

6. e8=R# - Pawn in e file is promoted to a rook and checkmate.. This is how you can mate in 3 moves.
7. For right move - You know how to end the game. Keep solving the puzzles
8. For wrong move - You missed to have a checkmate after a promotion. Try again

Categories of hard chess puzzle 0105

This hard chess puzzle falls in these categories.

1. [Hard chess puzzles](#)
2. [Mate in 3 puzzles in chess](#)
3. [Endgame puzzles in chess](#)
4. [Promotion puzzles in chess](#)
5. [Strategy puzzles in chess](#)
6. [Pawn puzzles in chess](#)
7. [Rook puzzles in chess](#)
8. [Queen puzzles in chess](#)
9. [Bishop puzzles in chess](#)

hard chess puzzle 0105 chart



Figure 15: hard chess puzzle 105 chart 1



Figure 16: hard chess puzzle 105 chart 2

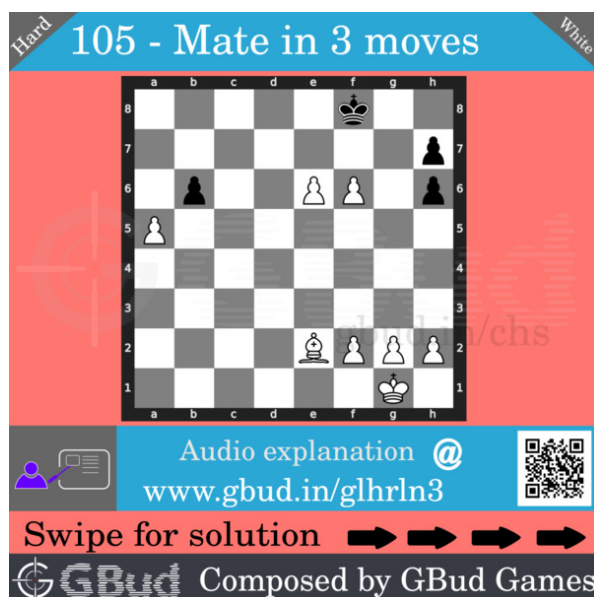


Figure 17: hard chess puzzle 105 chart 3

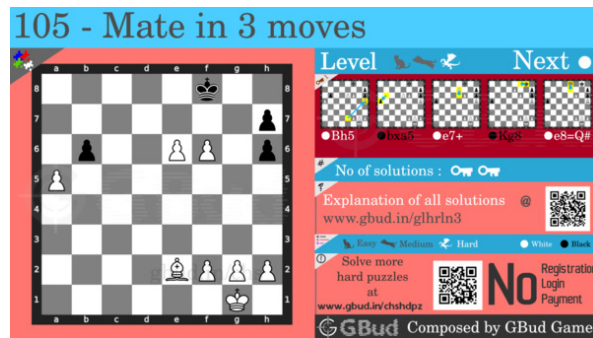


Figure 18: hard chess puzzle 105 chart 4

How to view the solution to hard chess puzzle 0105

To view the [solution to this puzzle](https://gbud.in/blog/game/chess/hard-chess-puzzles/hard-chess-puzzle-0105.html), follow the steps given below

1. Go to the [puzzle page](https://gbud.in/blog/game/chess/hard-chess-puzzles/hard-chess-puzzle-0105.html)
2. Click the solution button (Key as shown [below](#)) to view the solution

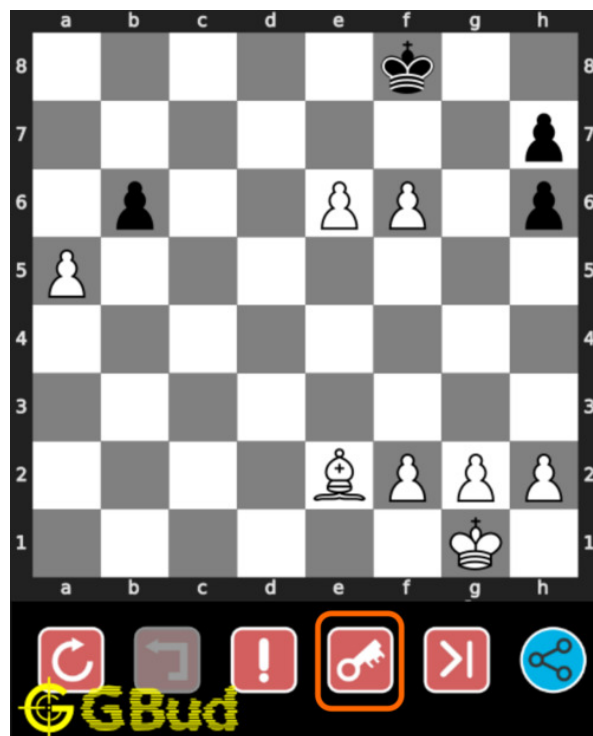


Figure 19: Click the solution button to view solutions @ <https://gbud.in/glhrln3>

How to get help for moves in the hard chess puzzle 0105

To get help or the possible next moves in the puzzle, , follow the steps given below

1. Go to the [puzzle page](#)
2. Click the help button (exclamation mark as shown [below](#)) to get help or suggestion on next possible [move](#)



Figure 20: Click the help button to get help on next move @ <https://gbud.in/glhrln3>



Figure 21: Solve more hard puzzles @ <https://gbud.in/chshdpz>



Figure 22: Solve other puzzles @ <https://gbud.in/chsgppz>

Play chess for free

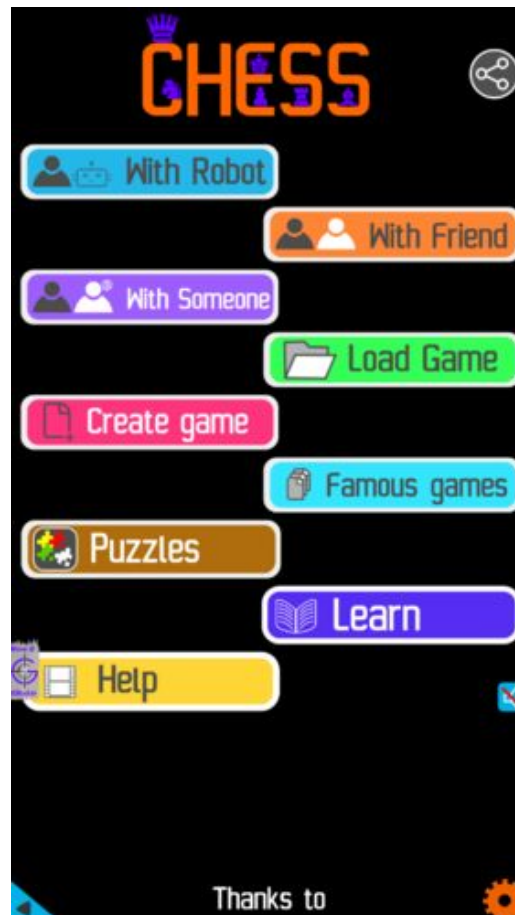


Figure 23: Play chess online for free. Solve puzzles and play with friends

Play chess for free at <https://gbud.in/chs>

We present you a platform to play chess online with friends for free. No need to install any app. You can play chess for free without registration or login.

Simple. You can do several chess related activities.

1. [solve chess puzzles](#)
2. [learn about chess](#)
3. [play chess with computer](#)
4. [play chess with friend](#)
5. [create your own chess games](#)

6. [fen viewer](#)
7. [fen editor](#)
8. [fen generator](#)
9. [pgn viewer](#)
10. [chess board editor](#)
11. [view famous chess games.](#)



Figure 24: Solve this puzzle online by scanning this QR code or go to the link below

<https://gbud.in/glhrln3>

Read the latest article on Hard Chess puzzle # 0105 - Mate in 3 moves by scanning this QR code or click the link

Previous article : « [Hard Chess puzzle # 0104 - Mate in 3 moves](#)

Next article : [Hard chess puzzles](#) »

[Back to top](#)

[Contact Us](#)